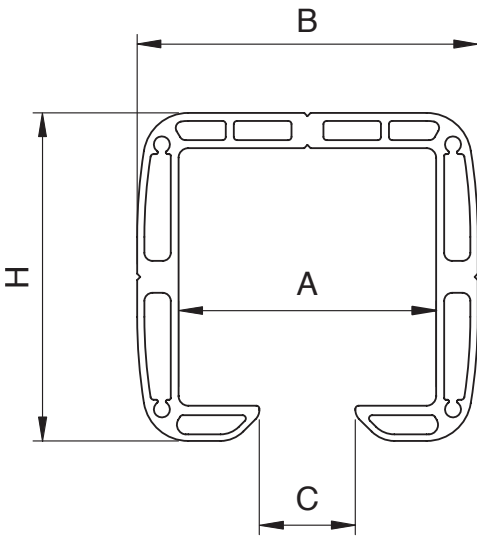
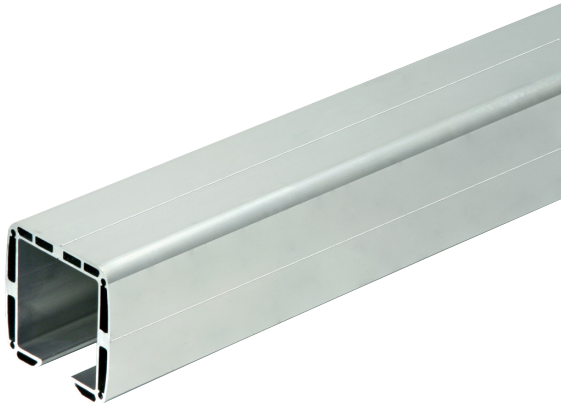


# 345M - ALUMINIUM TRACK 3 or 6m LENGTH



## PRODUCT DETAILS

Product code:	Description:
67CGA3453M	345M - Aluminium Track 3m
67CGA3456M	345M - Aluminium Track 6m



## DIMENSIONS

Dim.	3 & 6m Track
A	61
B	83
C	23
H	79

## TECHNICAL CHARACTERISTICS

Weight of Part kg	Material
4	Aluminium

## MAINTENANCE FREQUENCY\*

Private Home	Company	Warehouse	Condominium <20 Units	Condominium >20 Units
2 Years	2 Years	2 Years	1 Year	1 Year

\* This section refers to normal workplace conditions (not marine or particularly aggressive environments)

- Check inside edges of monorail
- Check for any deformation on body
- Check fixing of rail to upright

## IMPORTANT INFORMATION

### USE:

Monorail for self-supporting gates.

### TYPE

Monorail for carriages with wheels in nylon.

### FIXING:

For fixing under the lower upright of gate.

### MATERIAL:

Aluminium.

### RECYCLING:

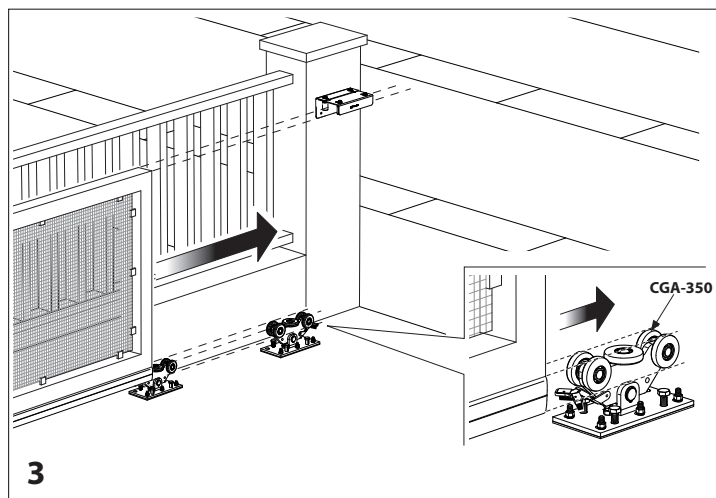
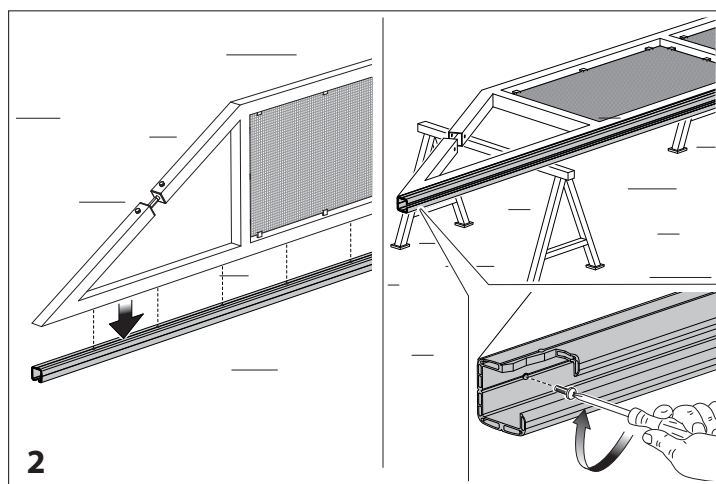
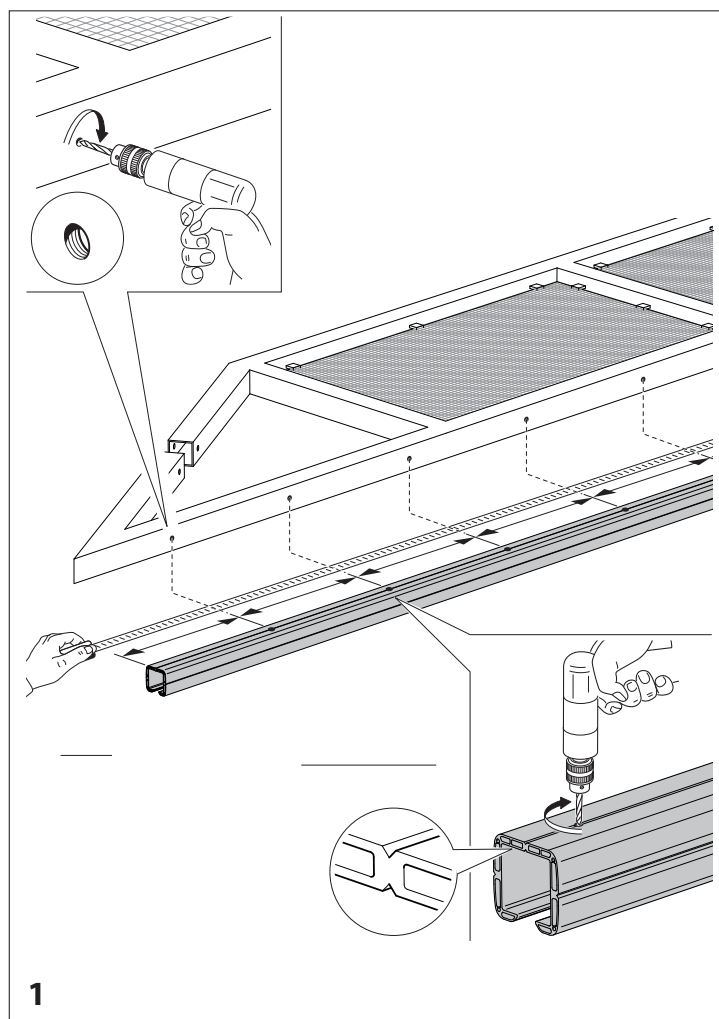
Disposal as aluminium scrap in accordance with the current laws in the country of installation.

### PARTS SUBJECT TO WEAR:

Surfaces of contact between rail and carriage wheels.

### IMPORTANT:

The manufacturer reserves the right to modify the characteristics of the product as required without notice. The manufacturer declines any liability for even partial modifications to the product, and the declared performance values are valid only if the installation procedures are carried out by qualified personnel.



Whilst every effort has been made to ensure the accuracy of the information supplied. F.H. Brundle cannot be held responsible for any errors or omissions. This product must only be employed for its original intended use. Any other use is wrong and potentially dangerous. Installation must be carried out in full compliance with current regulations. F.H. Brundle cannot be held liable for any damages resulting from wrongful, erroneous or negligent use.

